

Input data

System of measurement		Metric
Input type		Coupling for electric motor
Input speed	[rpm]	1400
Output speed	[rpm]	280
Ratio (i=)		5
Frequency	[Hz]	50
Input options		IEC
Requested input power	[kW]	0.25
Service factor		6.1
Rated Power P1	[kW]	1.52

Output data

Gear unit	F RT 40 B3 5 71 B5 AC 19	
------------------	---------------------------------	--

Type		RT - Worm speed reducers
Input type		F (Elastic coupling)
Size		40
Ratio (i=)		5
Input flange		B5
Input speed	[rpm]	1400
Output speed	[rpm]	280
Rated output torque	[Nm]	7.42
Service Factor		6.1
Efficiency		0.87

Gear unit configuration

Output shaft		Hollow output shaft
Fixing		Universal
Version		B3

Output radial and axial loads

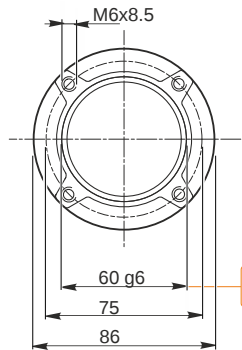
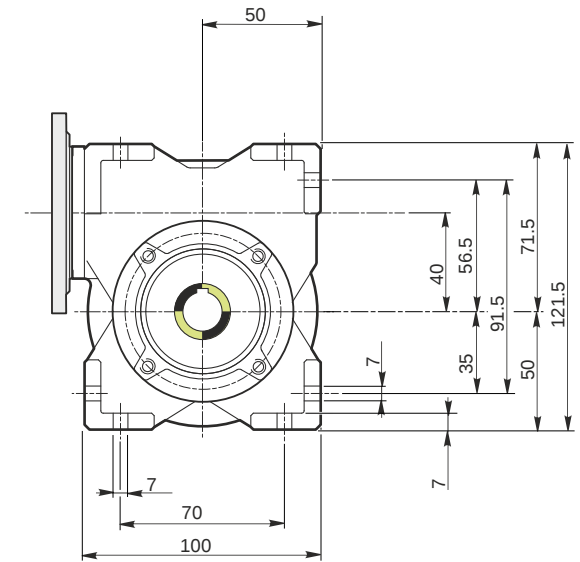
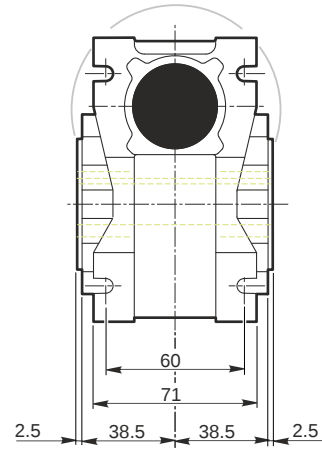
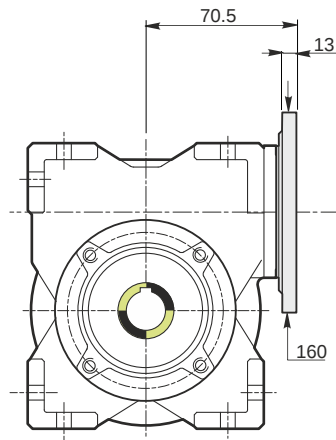
Ball bearings output radial load	[N]	1000
Taper bearings output radial load	[N]	1400
Ball bearings output axial load	[N]	200
Taper bearings output axial load	[N]	280

Accessories

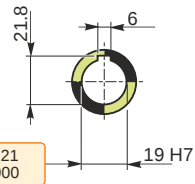
Hollow output shaft		AC 19
---------------------	--	-------

Electric motor coupling

Size		71 A4
Poles n.		4
Power	[kW]	0.25

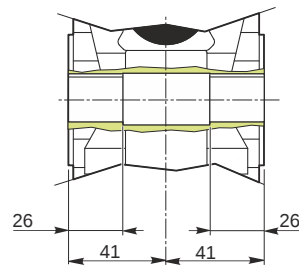


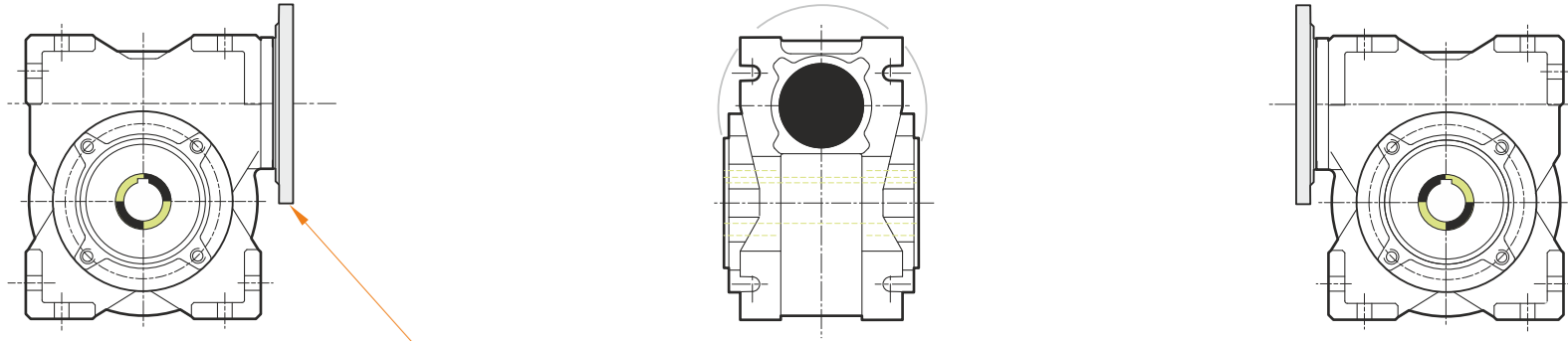
Hollow output shaft



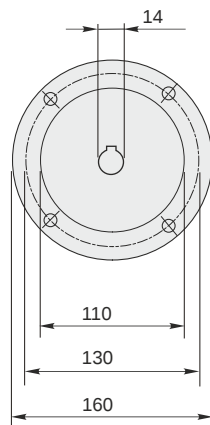
59.99
59.971

19.021
19.000



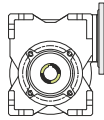


This gear unit is provided with an elastic coupling motor fitting

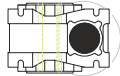


Mounting positions

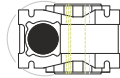
B3



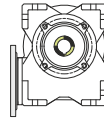
B6



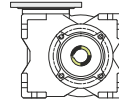
B7



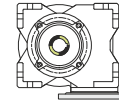
B8



V5



V6



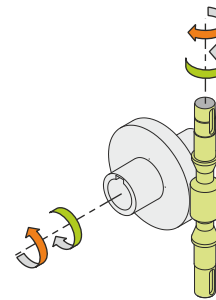
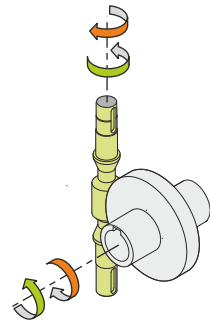
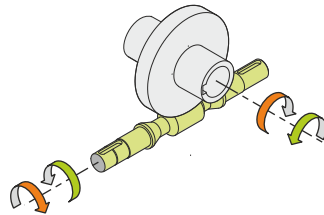
0.08



← Oil quantity [litres]

Lubricant type: Long life synthetic oil ISO VG320

Direction of rotation



Weight

Gear unit [kg] 2.5

Gearing data

Axial module	2
Number of starts	6
Lead angle	30° 57'
Pressure angle	20°

Backdriving

Static back-driving
Quick back-driving
Dynamic back-driving