

### Input data

System of measurement		Metric
Input type		Coupling for electric motor
Input speed	[rpm]	1400
Output speed	[rpm]	280
Ratio (i=)		5
Frequency	[Hz]	50
Input options		IEC
Requested input power	[kW]	0.09
Service factor		16.9
Rated Power P1	[kW]	1.52

### Output data

<b>Gear unit</b>	<b>F RT 40 B3 5 56 B5 AC 18</b>
------------------	---------------------------------

Type		RT - Worm speed reducers
Input type		F (Elastic coupling)
Size		40
Ratio (i=)		5
Input flange		B5
Input speed	[rpm]	1400
Output speed	[rpm]	280
Rated output torque	[Nm]	2.67
Service Factor		16.9
Efficiency		0.87

#### Gear unit configuration

Output shaft		Hollow output shaft
Fixing		Universal
Version		B3

#### Output radial and axial loads

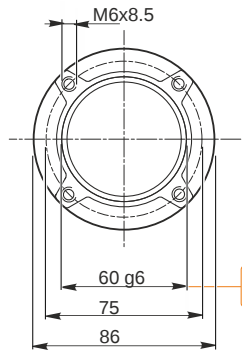
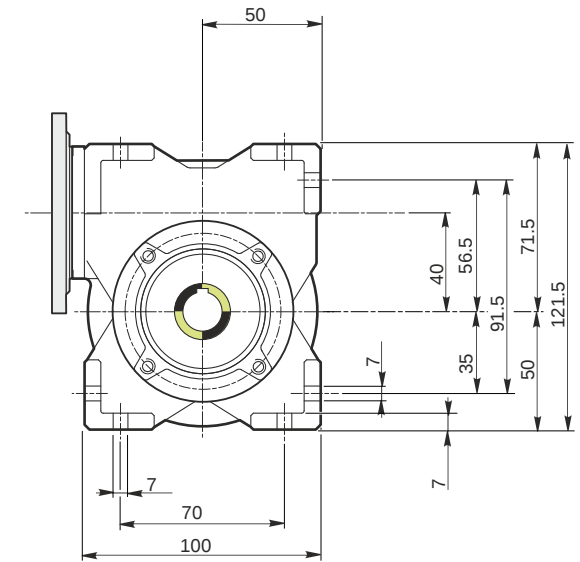
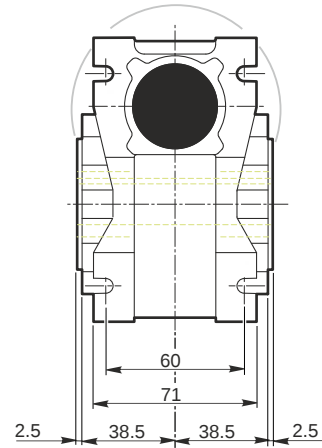
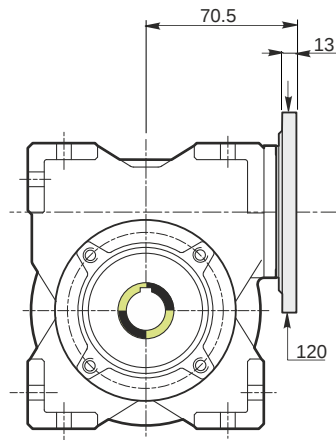
Ball bearings output radial load	[N]	1000
Taper bearings output radial load	[N]	1400
Ball bearings output axial load	[N]	200
Taper bearings output axial load	[N]	280

#### Accessories

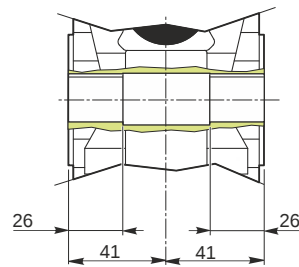
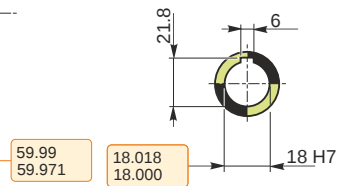
Hollow output shaft		AC 18
---------------------	--	-------

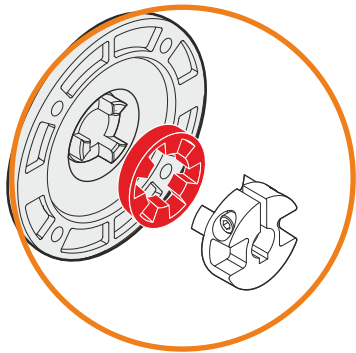
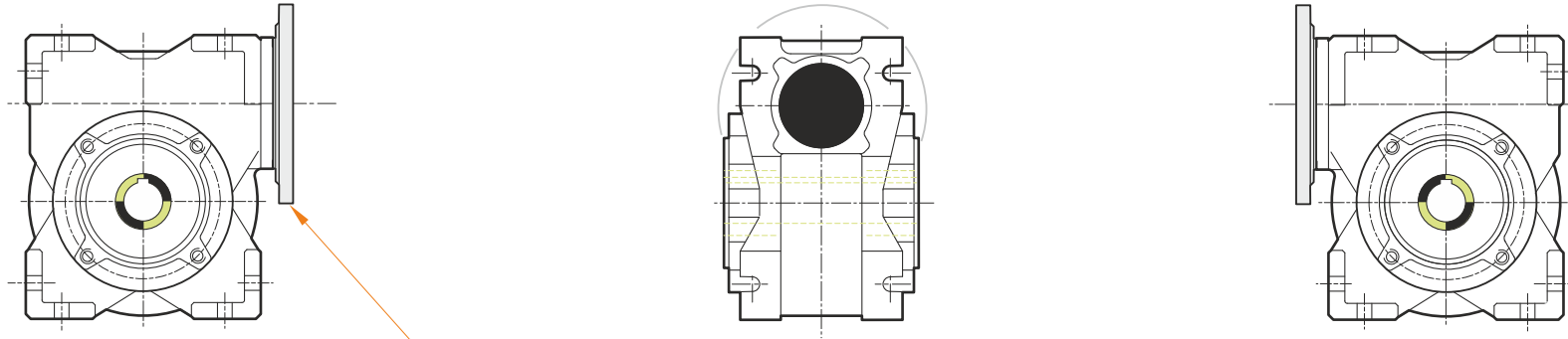
#### Electric motor coupling

Size		56 B4
Poles n.		4
Power	[kW]	0.09

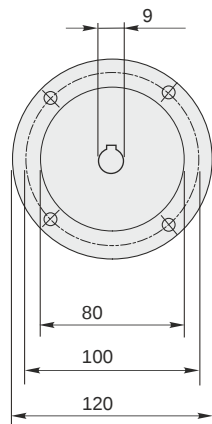


Hollow output shaft





This gear unit is provided with an elastic coupling motor fitting



### Mounting positions

B3

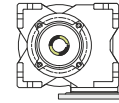
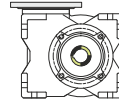
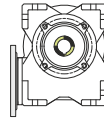
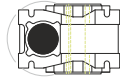
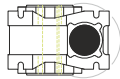
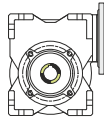
B6

B7

B8

V5

V6



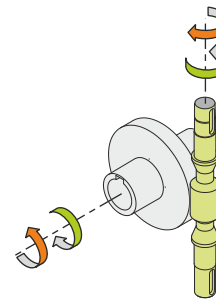
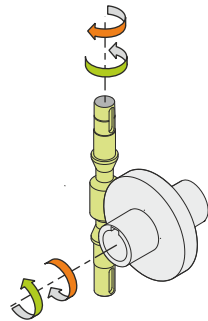
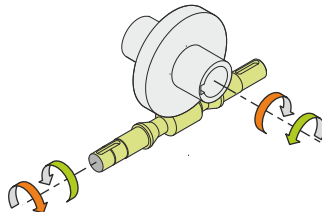
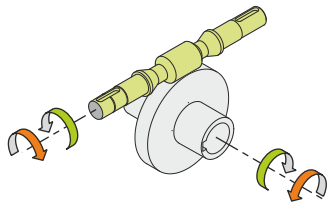
0.08



← Oil quantity [litres]

Lubricant type: Long life synthetic oil ISO VG320

### Direction of rotation



### Weight

Gear unit [kg] 2.5

### Gearing data

Axial module	2
Number of starts	6
Lead angle	30° 57'
Pressure angle	20°

### Backdriving

Static back-driving  
Quick back-driving  
Dynamic back-driving