

### Input data

System of measurement		Metric
Input type		Coupling for electric motor
Input speed	[rpm]	1400
Output speed	[rpm]	93.33
Ratio (i=)		15
Frequency	[Hz]	50
Input options		IEC
Requested input power	[kW]	0.25
Service factor		2.2
Rated Power P1	[kW]	0.55

### Output data

#### **Gear unit** F RT 40 B3 15 71 B14 AC 19

Type		RT - Worm speed reducers
Input type		F (Elastic coupling)
Size		40
Ratio (i=)		15
Input flange		B14
Input speed	[rpm]	1400
Output speed	[rpm]	93.33
Rated output torque	[Nm]	19.95
Service Factor		2.2
Efficiency		0.78
Inertia moment	[kgm <sup>2</sup> ]	0.000019

#### **Gear unit configuration**

Output shaft		Hollow output shaft
Fixing		Universal
Version		B3

#### **Output radial and axial loads**

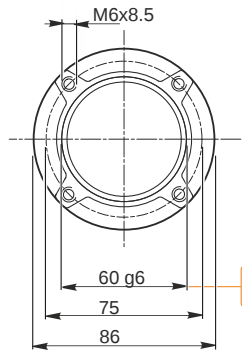
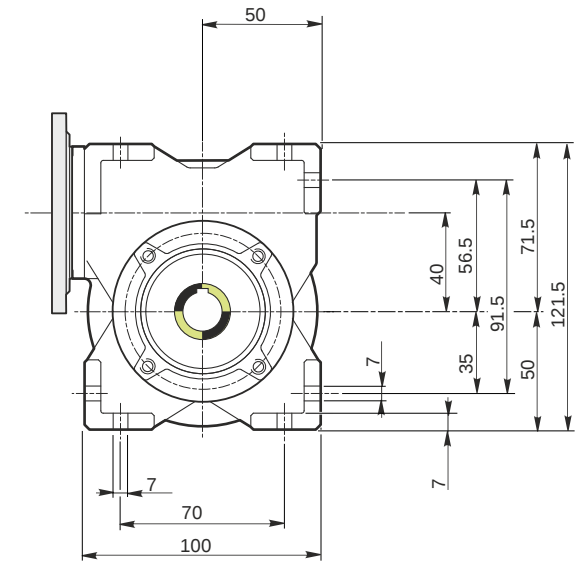
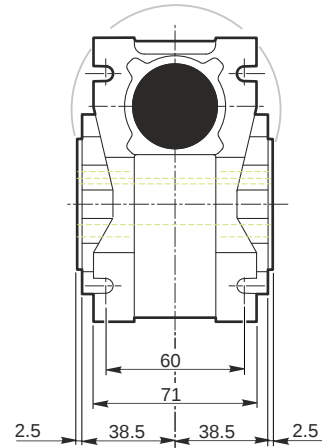
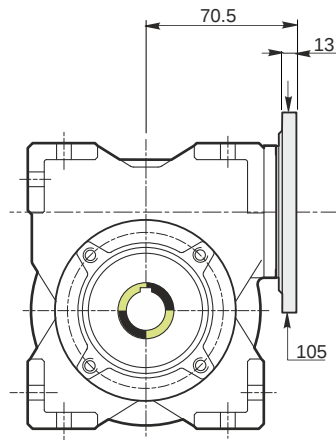
Ball bearings output radial load	[N]	1200
Taper bearings output radial load	[N]	1650
Ball bearings output axial load	[N]	240
Taper bearings output axial load	[N]	330

#### **Accessories**

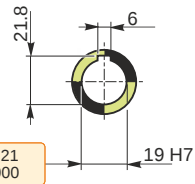
Hollow output shaft		AC 19
---------------------	--	-------

#### **Electric motor coupling**

Size		71 A4
Poles n.		4
Power	[kW]	0.25

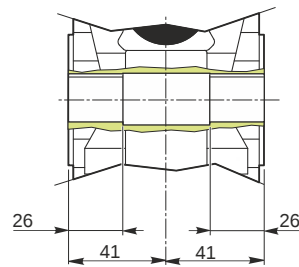


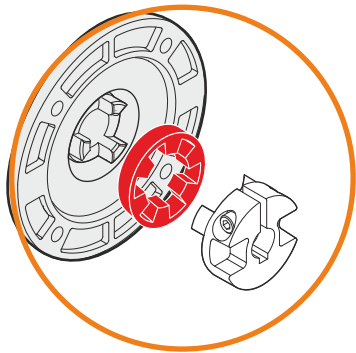
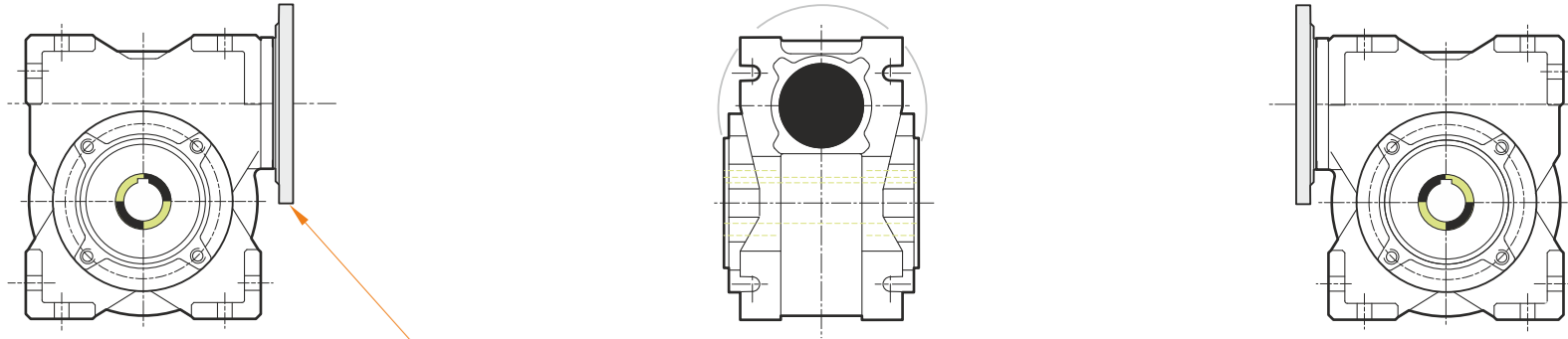
Hollow output shaft



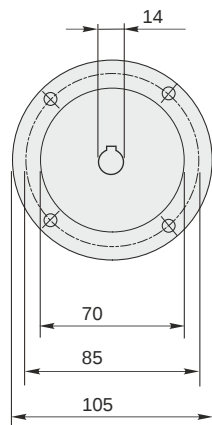
59.99  
59.971

19.021  
19.000





This gear unit is provided with an elastic coupling motor fitting



### Mounting positions

B3

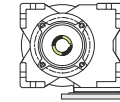
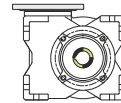
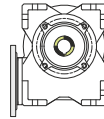
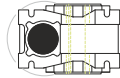
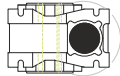
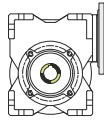
B6

B7

B8

V5

V6



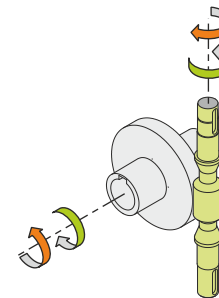
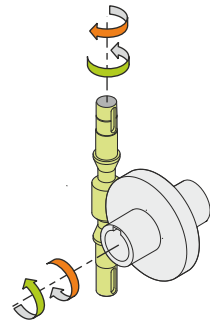
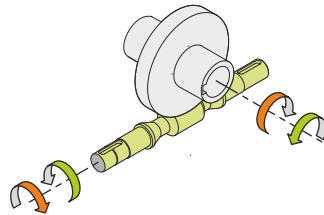
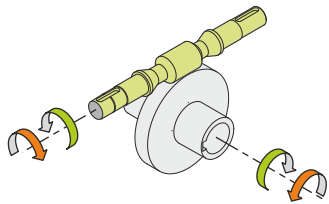
0.08



← Oil quantity [litres]

Lubricant type: Long life synthetic oil ISO VG320

### Direction of rotation



### Weight

Gear unit [kg] 2.5

### Gearing data

Axial module	2
Number of starts	2
Lead angle	11° 18'
Pressure angle	20°

### Backdriving

Variable static self-locking  
Quick back-driving in case of vibrations  
Dynamic back-driving