

Input data

System of measurement		Metric
Input type		Coupling for electric motor
Input speed	[rpm]	1400
Output speed	[rpm]	93.33
Ratio (i=)		15
Frequency	[Hz]	50
Input options		IEC
Requested input power	[kW]	5.5
Service factor		1.2
Rated Power P1	[kW]	6.52

Output data

Gear unit	F RT 110 B3 15 132 B14 AC 42
------------------	-------------------------------------

Type		RT - Worm speed reducers
Input type		F
Size		110
Ratio (i=)		15
Input flange		B14
Input speed	[rpm]	1400
Output speed	[rpm]	93.33
Rated output torque	[Nm]	472.73
Service Factor		1.2
Efficiency		0.84
Inertia moment	[kgm ²]	0.001796

Gear unit configuration

Output shaft		Hollow output shaft
Fixing		Universal
Version		B3

Output radial and axial loads

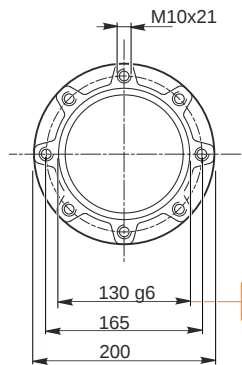
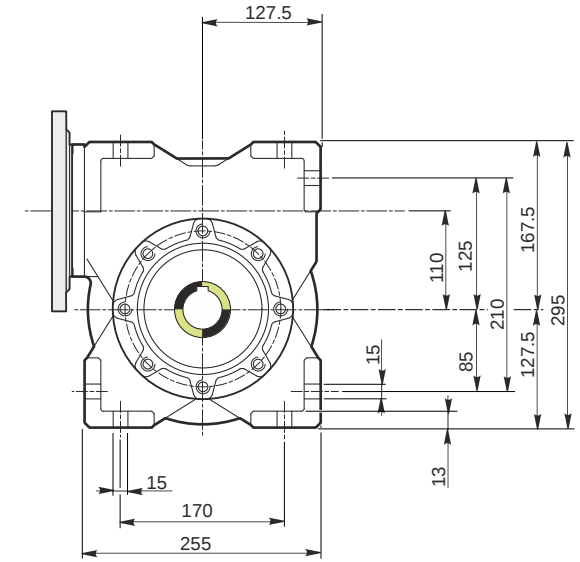
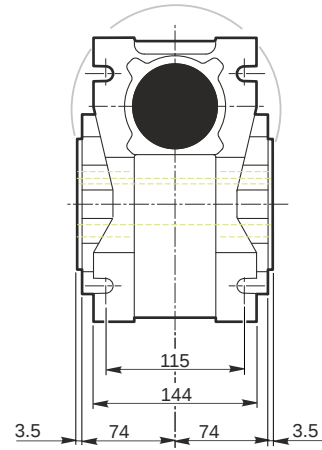
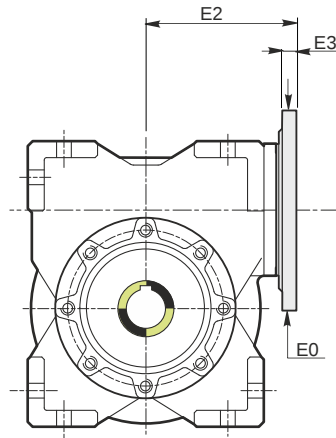
Ball bearings output radial load	[N]	5200
Taper bearings output radial load	[N]	6700
Ball bearings output axial load	[N]	1040
Taper bearings output axial load	[N]	1340

Accessories

Hollow output shaft		AC 42
---------------------	--	-------

Electric motor coupling

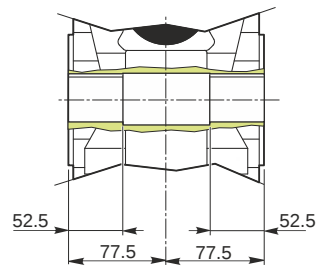
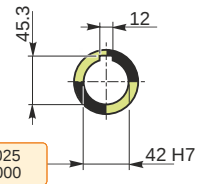
Size		132 S4
Poles n.		4
Power	[kW]	5.5

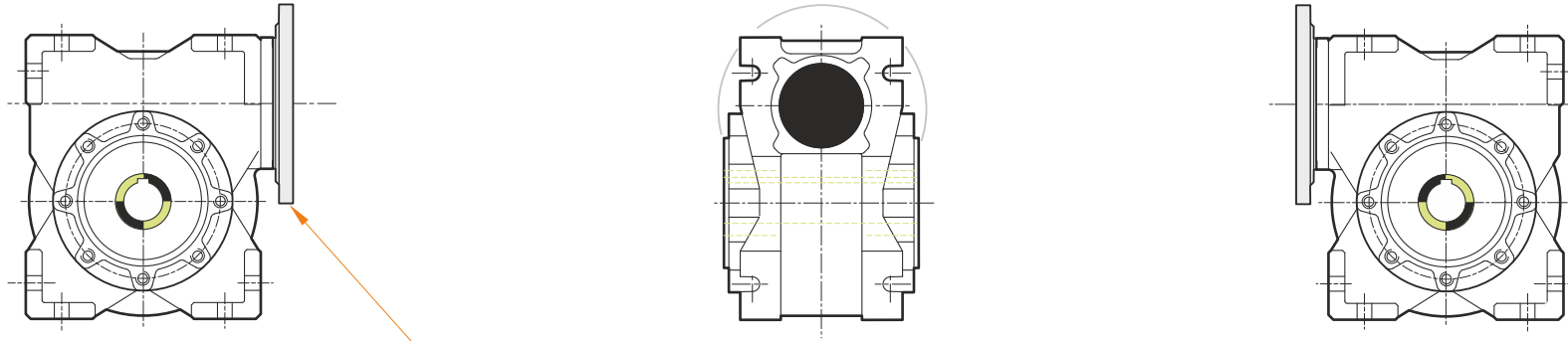


Hollow output shaft

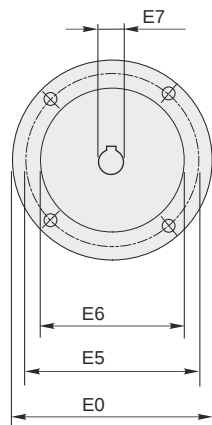
129.986
129.961

42.025
42.000



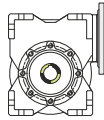


This gear unit is provided with an elastic coupling motor fitting

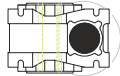


Mounting positions

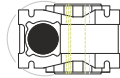
B3



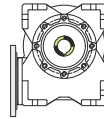
B6



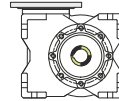
B7



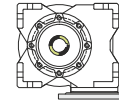
B8



V5



V6



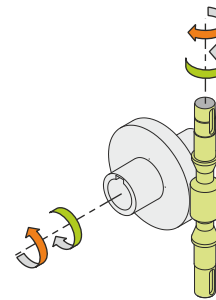
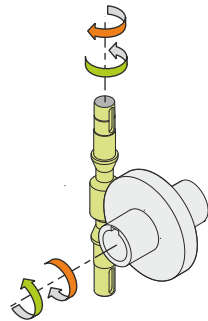
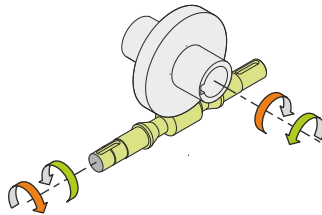
1.5



← Oil quantity [litres]

Lubricant type: Long life synthetic oil ISO VG320

Direction of rotation



Weight

Gear unit [kg] 39

Gearing data

Axial module 5.8
 Number of starts 2
 Lead angle 14° 09'
 Pressure angle 20°

Backdriving

Static back-driving
 Quick back-driving
 Dynamic back-driving